



COMBINA  
GLOBAL



**CUSTOM  
INTERIOR  
FINISHINGS**



**COMBINA**  
GLOBAL

We are your strategic building materials partner, specializing in high-quality products and materials through our trusted global manufacturing facilities. Through Combina Global, you will receive the high volume savings of the global market with the simplicity of a local supplier. We are your one-stop shop.



# CONTENTS

<b>CABINET LAYER COMPOSITION &amp; DOOR STYLES</b> .....	4-7
<b>CABINETS AND COUNTERTOPS</b>	
Melamine .....	8-9
Thermofoil / Vinyl .....	10-11
High pressure laminate .....	12-14
Polyurethane terephthalate .....	15-16
Lacquer .....	17-18
Quartz .....	19
Granite .....	20
<b>CABINET HARDWARE</b>	
Cabinet handles .....	21-24
Cabinet hinges .....	25
Drawer and slides .....	26
<b>SPC LUXURY VINYL PLANK</b> .....	27-30
<b>CARPET TILES</b> .....	31-37
<b>CERAMIC WALL TILES</b> .....	38-39
<b>BLINDS</b>	
Honeycomb blinds .....	40-43
Roller blinds .....	44-55
Zebra blinds .....	56-61
<b>PLUMBING FIXTURES &amp; BATHING SYSTEMS</b>	
Bathroom faucets .....	63
Bathtub faucets & kitchen faucets .....	64
Shower faucet sets .....	65
Shower sets .....	66-68
Shower doors .....	69
Bathtubs .....	70
Free-standing bathtubs .....	71

\*The sample images shown in this catalogue may not accurately represent the final product. Please contact us for more details or visit our showroom floor.

# CABINET LAYER COMPOSITION & DOOR STYLES

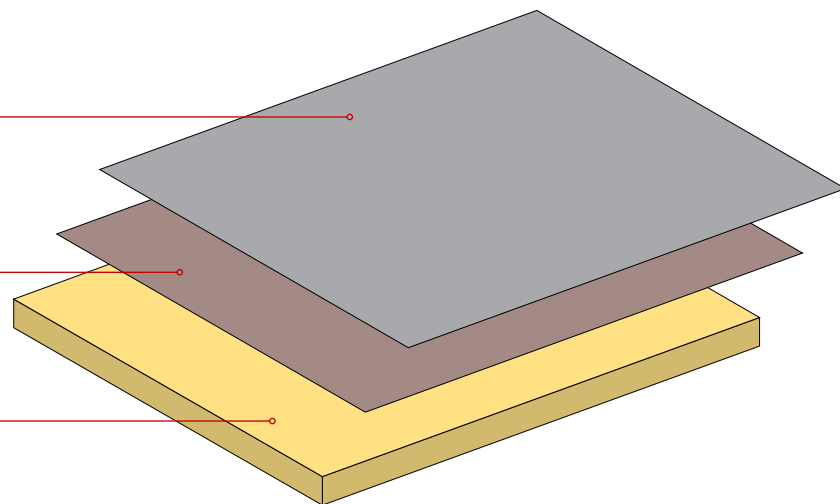


## | MELAMINE (TFL)

Melamine Decorative  
Panel Paper

Different types of  
texture/finish

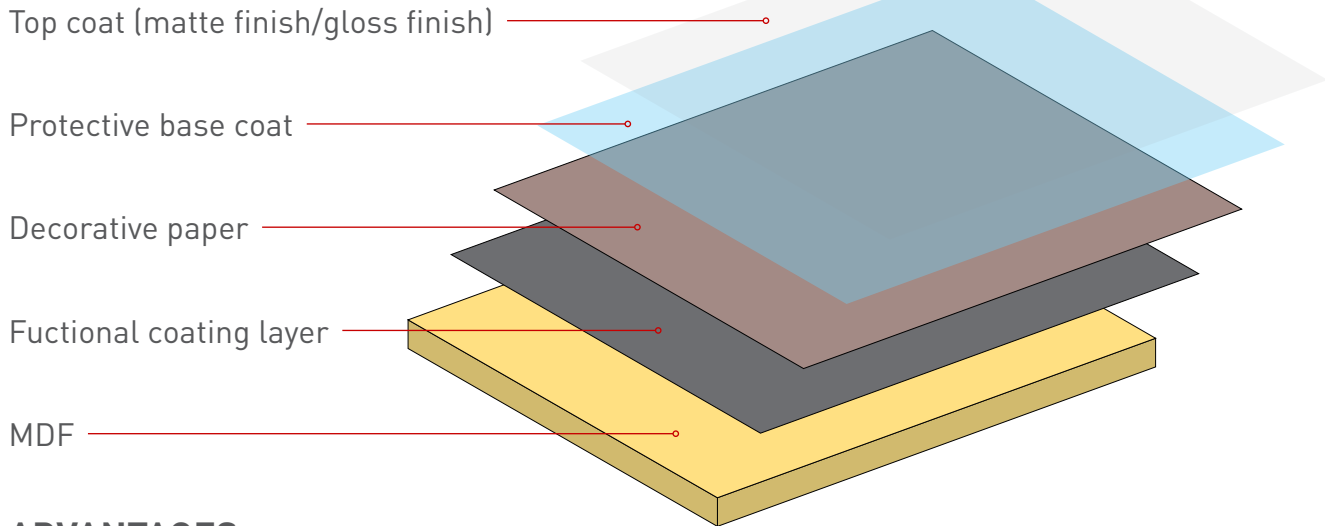
MDF



### ADVANTAGES

- Durable and scratch-resistant
- Heat-resistant and suitable for use in high-temperature environments
- Easy to clean and maintain
- A lightweight material and easy to handle
- Cost-effective compared to other alternatives
- It is versatile and can be molded into various shapes and designs
- Chemically resistant, making it useful in laboratory settings

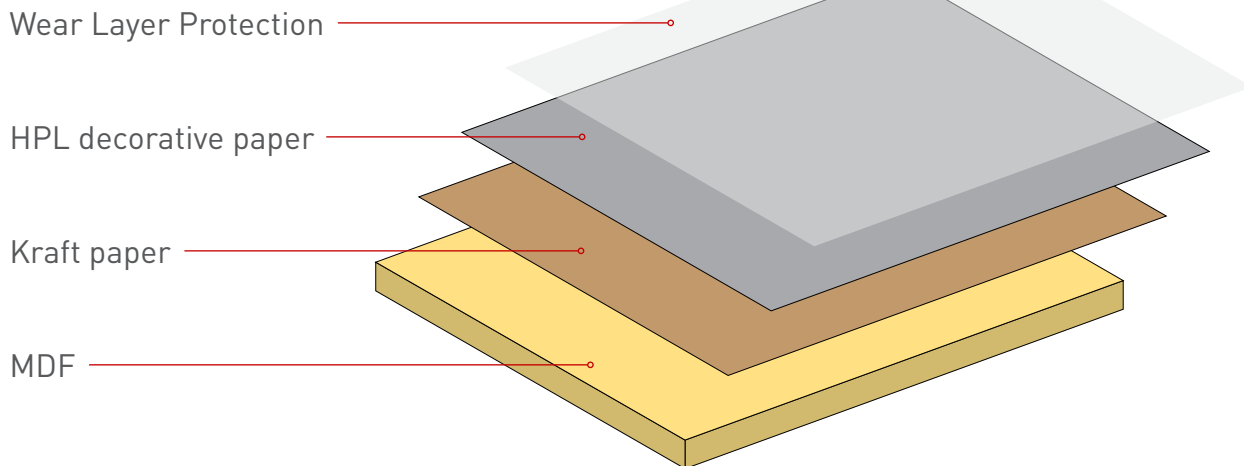
## | THERMOFOIL/VINYL



### ADVANTAGES

- Budget-friendly option
- Available in a variety of colors and patterns
- Easy to clean and maintain
- Made from recyclable PVC and has a low-waste manufacturing process
- Moisture-resistant, making it ideal for high-humidity areas

## | HIGH PRESSURE LAMINATE (HPL)

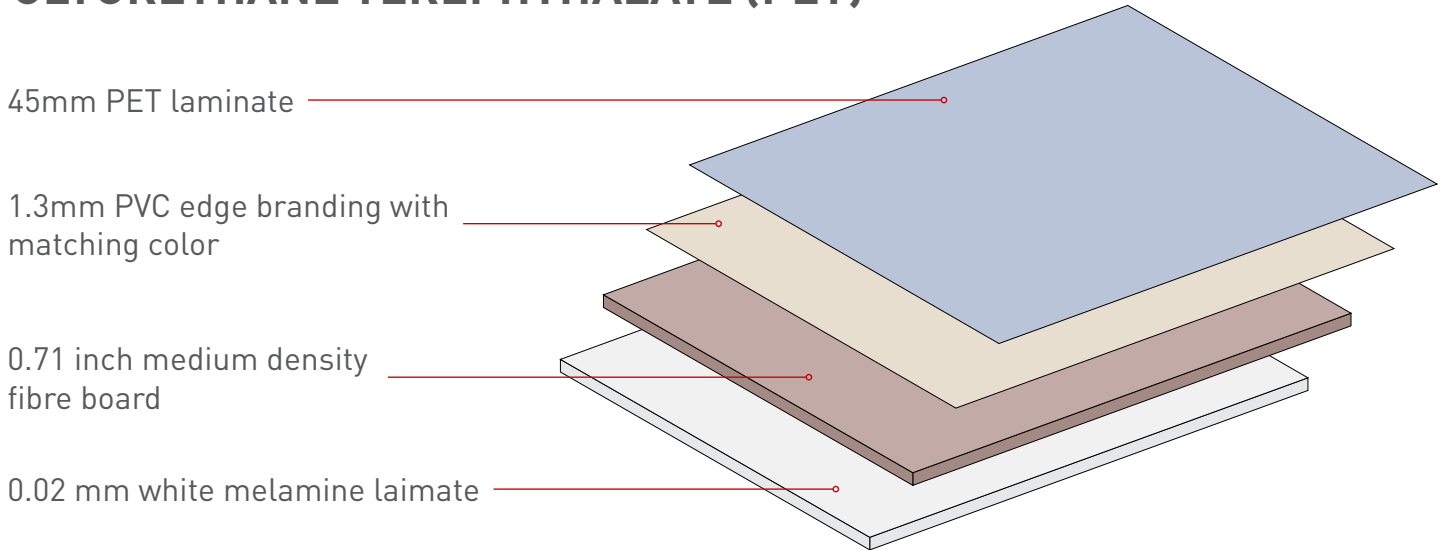


### ADVANTAGES

- Durable and versatile material
- Available in various designs, patterns, and colors
- Easy to maintain, cost-effective, and environmentally friendly
- Ideal for high-traffic areas
- Resistant to scratches, impact, heat, and stains
- Made from recycled materials that can be recycled again at the end of its life

\*Before finalizing your choice, please confirm the texture and finish of the color with Combina Global. The effects of Thermofoil/PET are dependent on the actual Thermofoil/PET sample or color board.

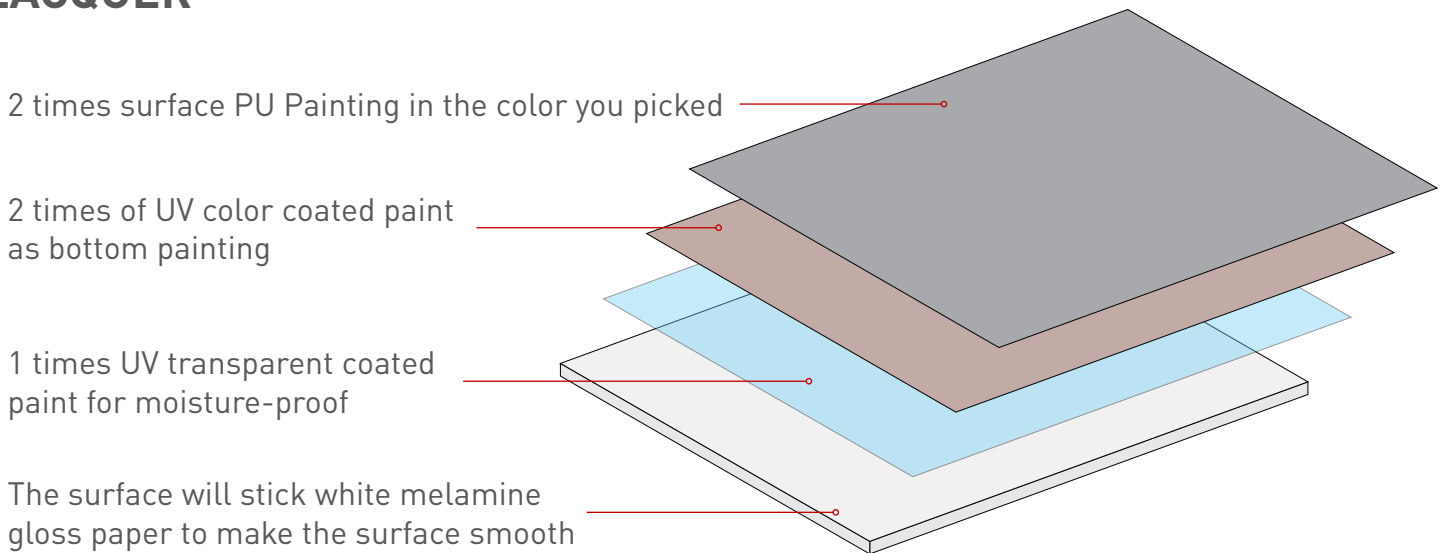
# POLYURETHANE TEREPHTHALATE (PET)



## PRODUCT INFORMATION

PET door is made of 3/4" (19mm) thick MDF board, with PET laminate on the exterior and melamine laminate on the interior, ABS banding of matching color on all edges. PET film coating uses imported raw materials and colorants, which comply with the US FDA food contact certification and medical biological testing standards, making it safer and healthier.

# LACQUER

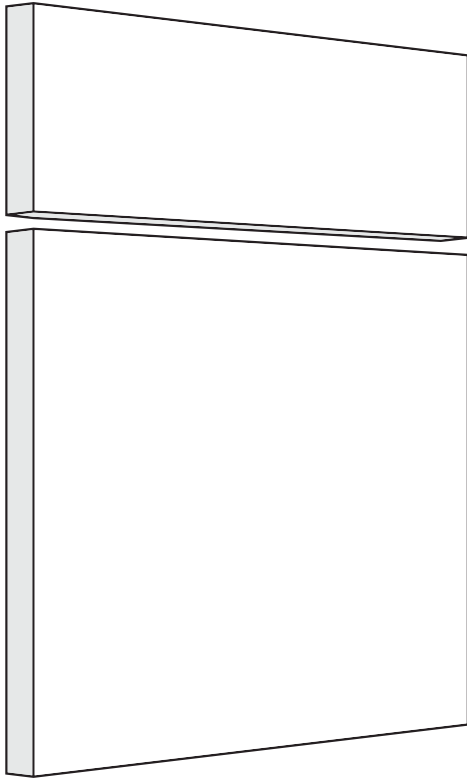


## ADVANTAGES

- Durable and can withstand wear and tear
- High-gloss finish that enhances the natural beauty of the material
- Ideal for use in high-humidity environments or in areas where the finished product may come into contact with water
- Resistant to moisture
- Can be applied using a variety of methods, including spraying, brushing, or dipping
- Provides some degree of protection against UV radiation

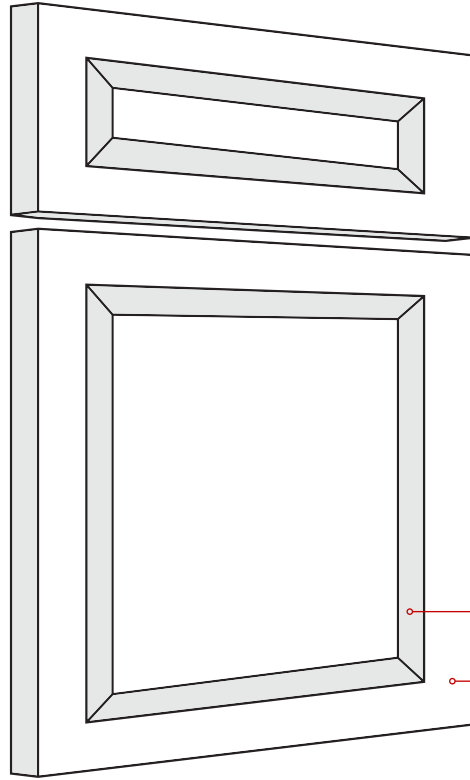
# CABINET DOOR STYLES

\*All door panels feature an 18 mm thickness.



## FLAT PANEL

Available in Melamine, Thermofoil, HPL, PET, Lacquer

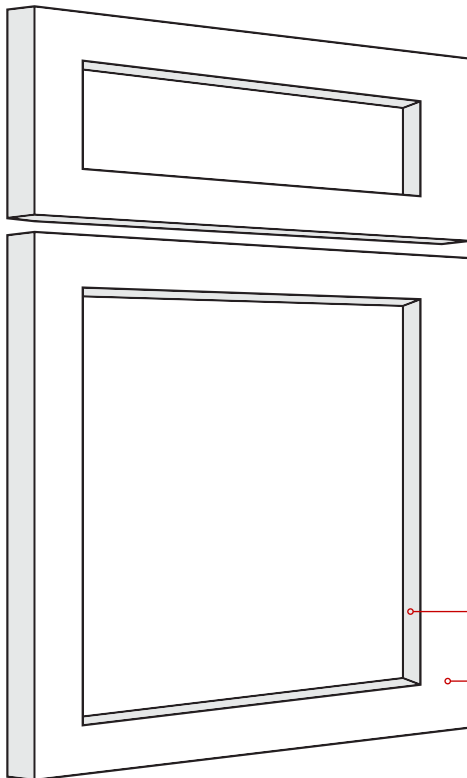


Bevelled

70mm

## WIDE SHAKER BEVELLED

Available in Thermofoil, Lacquer

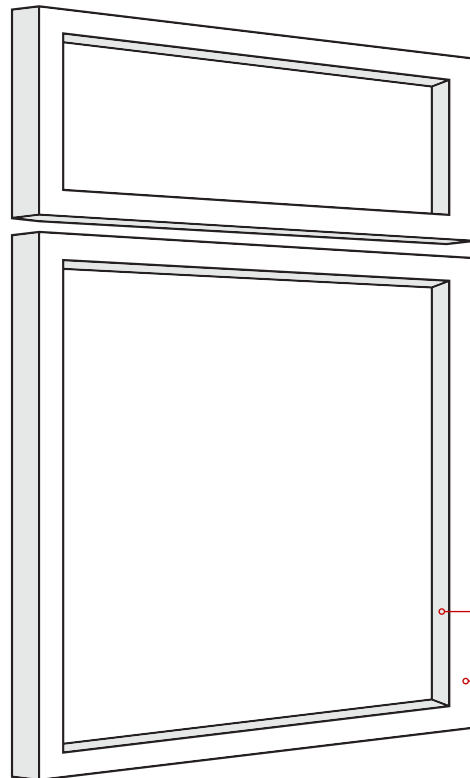


Rigid

70mm

## WIDE SHAKER RIGID

Available in Melamine (seam design may vary), Thermofoil



Rigid

12mm

## THIN SHAKER RIGID

Available in Thermofoil, Lacquer

# CABINETS AND COUNTERTOPS



## | MELAMINE (TFL)

Available in a wide range of design options, Melamine offers a cost-effective, high-quality solution for cabinets in both kitchens and vanities. Its finish resembles the natural appearance of wood, creating a warm, stylish, and inviting living space.



S-215D Molandi Rongyan Grey



S-037D Diamond White



S-101D Gentle Grey



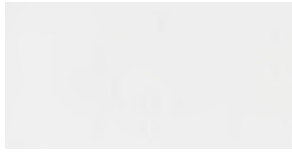
S-219D Molandi Rock



S-221D Empire Green



S-212D Molandi Khaki Grey



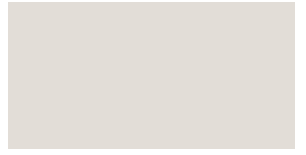
7037Y Jazz White



S-210D Molandi Senior Grey



S-222D Molandi Duke Grey



S-218D Molandi Aurora Grey



XL-011 Tan



8159Y Belga Walnut



8156Y Oss Oak



8158Y Tusca Walnut



8120S Cabot Pine



M2015 Evergreen Oak



8152Y Kodi Oak



8160Y Cartier Teak



BJ8108L Isabella Grey



#8130L Light Weaves



#8092S Norway Walnut



#8125S Moshier Walnut



BJ8133L Simila Oak



BJ8107L Isabella



8163L Geometric Space



WD0122 Grey Oak



#8117S Crack Oak



BJ8100S Nevada Teak



8121L Calavi Oak



8132Y Gray Oak



8135L Calgary Maple



BJ8101T Andean Black Oak



BC7187W Bleached Legno



BC7179W Finland White Oak



WD2069L Daybreak



8122C Golden Oak



LS-001 Cream White



WD0123M Grey Elm



BH7261W Costa Nogal



BH1924M Vogue Wood



YM-001 Fresco



BC8102M Nicolo Wood



BC7182W Isa Nogal



BH8094DR Mocha Strand



BH2319DR Chestnut Log



BH8095B Avignon Grey



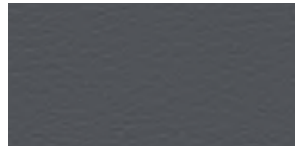
BH8124H Natural Oak



BH0718P Bastion Grey



BC7173W Canyon Avant



BH0724P Noble Grey

## | THERMOFOIL / VINYL

Available in High-Gloss or Matte finishes, Thermofoil cabinet doors are durable and low maintenance, ideal for both kitchen and vanity cabinets. They offer the look of painted or laminated cabinetry, creating a uniform, smooth surface with no color variation or streaks. The thermofoil layer, made of vinyl, forms a seamless, non-porous surface that doesn't trap dirt, keeping the doors looking great and easy to clean.

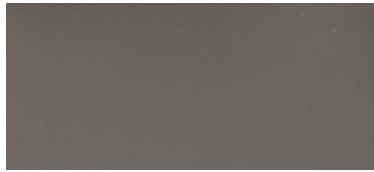




YS-737T Endless Night (Glossy)



YS-331SF White Smoke (Matt)



YS-336S Tea Brown (Matt)



YS-337S Latte (Matt)



YS-340M Breath of the Wild (Matt)



YS-341M Rosewood (Matt)



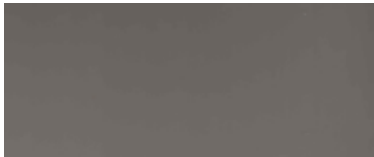
YS-342S Gray Root (Matt)



YS-343S Heavy Cloud (Matt)



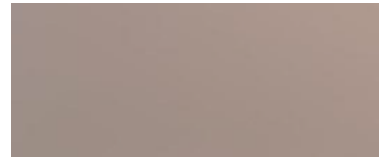
YS-517F Angel White (Super Matt)



YS-520F Pale Brown (Super Matt)



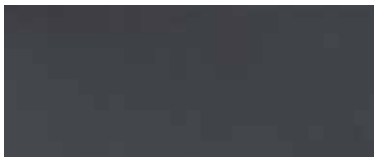
YS-521F Graphite (Super Matt)



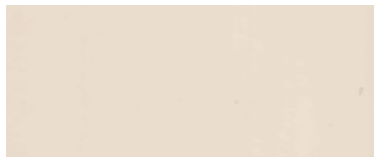
YS-726T Clay (Glossy)



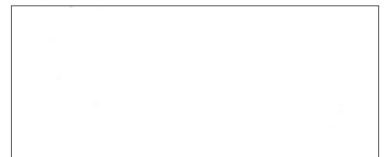
YS-723T Silver (Glossy)



YS-338SF Black Gray (Matt)



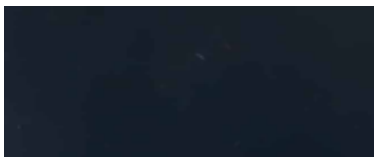
YS-518F Bright Cream (Super Matt)



YS-728T Warm White (Glossy)



YS-751T Glacier (Glossy)



YS-752T Anthracite Gray (Glossy)



YS-520F Pale Brown (Super Matt)



YS-363S Navy Blue (Matt)



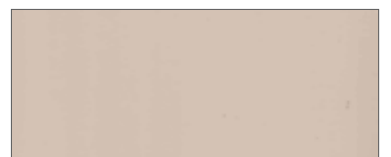
YS-354M Gary Lightwood (Matt)



YS-351M Golden Elm (Matt)



YS-359S Atlas Cedar Green (Matt)



YS-519F Pebble Grey (Super Matt)

\*Additional Thermofoil / Vinyl options available upon request



## HIGH PRESSURE LAMINATE (HPL)

HPL is a durable material that securely adheres to wood without peeling, resulting in a longer-lasting product with a high-end appearance. It is one of the best materials for kitchen and vanity cabinet doors. HPL offers a cost-effective alternative for projects requiring a premium look. With a wide variety of wood-grain designs and solid colors, it's easy to match the many styles and trends of today.





FYJ4257 Dale Hoffman Elm



FYJ5273 Fia Oak Giovanni



FYJ5268 Sierra Oak Granada



FYJ5267 Genil Oak Granada



FYJ5270 Darro Oak Granada



FYJ5257 Oscuro Culban Palisander



FYJ5245 Culban Palisander



FYJ5266 Elsa Noce Portofino



FYJ6267 Febe Noce Portofino



FYJ1268 Gala Noce Portofino



FYL7271 Valda Tivoli Elm



FYJ9308 Vogue Wood



FYJ9203 Bodhi Ash



FYJ5272 Gemma Oak Giovanni



FYJ5274 Belva Oak Giovanni



FYL8802 Weather Greywood



FYJ8798 White Ash



FYL8914 Weather Greywood



FYJ8813 Cuban Wood



FYJ8230 Teak Ebony



FYL8917 Java Redwood



FYJ8967 Logan Oak



FYJ5255 Emile Hemavah Ash



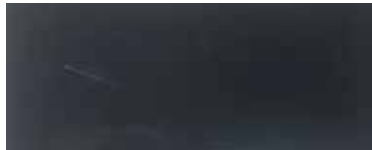
FYJ8102 Sliver Brush



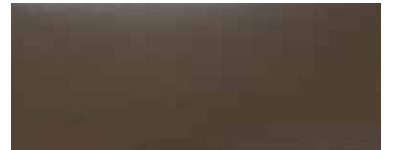
FYJ8001 Stainless Brush



FYJ3912 Charcoal Grey



FYJ3806 Sphinx



FYJ3342 Earth



FYJ3200 Dark Chocolate



FYJ5263 Smoked Wood Cross



FYJ3909 Storm Black



FYJ3770 Sarum Grey



FYJ3927 Daybreak



FYJ3197 Dover White



FYJ3319 Leather



FYJ3949 Snow



FYJ3784 Peruvian Clay



FYJ7331 Lalo Ramblas



FYJ7988 Cement

\*Additional High Pressure Laminate (HPL) options available upon request



FYJ5460 Karrakatta



FYJ7476 Biotite Rock



FYJ9049 Unique Shuttle



FYJ8849 Natural Teak



FYJ9398 Burma Teak



FYJ8860 Weather Teak



FYJ9027 Rift Arbor



FYJ9030 Light Elm



FYJ9000 Unique Shuttle



FYJ9032 Rift Walnut



FYJ9090 Red Sandal



FYJ9192 Fresh Walnut



FYJ9104 Pure Teak



FYJ5243 Natural Walnut



FYJ6252 Natural Walnut



FYJ8843 Natural Ash



FYJ8852 Bleached Wenge



FYJ9869 Crystie Pink Oak



FYJ9325 Natural Walnut



FYJ6653 Chalet Oak



FYJ6652 Cottage Oak



FYJ9263 Technology Gold Oak



FYJ9111 Rift Oak



FYJ8847 Jarrah Legno



FYJ8848 Blacken Legno



FYJ9150 Wind Walnut



FYJ9997 Alice Walnut



FYJ9873 Smoked Ribbon Wood



FYJ9012 Sander



FYJ9372 Rising Sun



FYJ9373 Walking Moon



FYJ6243 Natural Walnut



FYJ7269 Luna Tivoli Elm



FYJ8845 Bleached Legno



FYJ8846 Oiled Legno



## **POLYURETHANE TEREPHTHALATE (PET)**

PET finishes offer a sleek, modern aesthetic that adds a touch of elegance to any space, including kitchen and vanity cabinets. Crafted with precision and attention to detail, these finishes are designed to withstand daily wear, resisting scratches, stains, and heat, to ensure the surfaces maintain their beauty for years to come.



6735 Hematite Copper



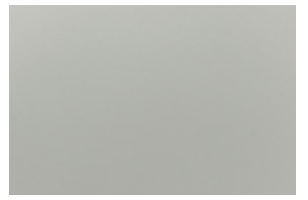
6736 Sky Cloud Grey



XH0032 Fortress White



XH0718 London Grey



XH0725 Matte Space Grey



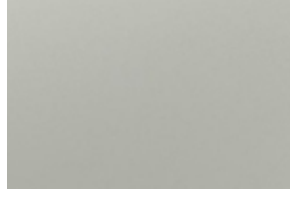
XH0748 Matte Oat Grey



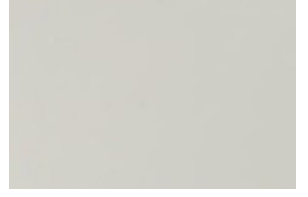
XH0749 Brazil Coco



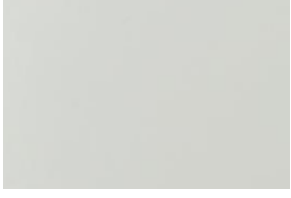
XH0751 Matte Red



XH0752 Ireland Grey



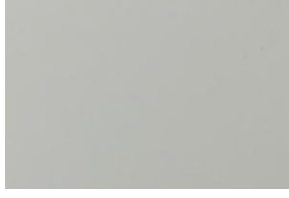
Y621 Warm White Glossy



Y665 Iceberg White



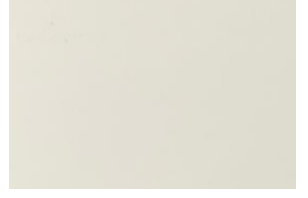
Y666 Jeju Matte Grey



Y669 Rock Lime Grey



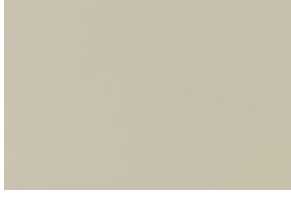
Y670 Flashing Sliver Grey



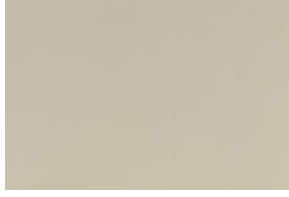
Y674 Ivory White



Y675 Marl glossy Grey



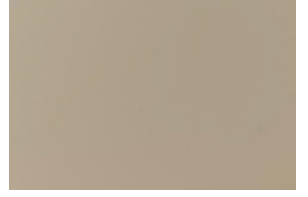
Y680 Khaki Ash



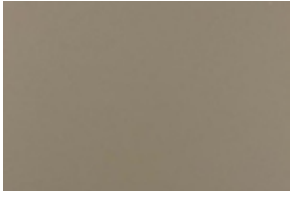
Y681 Twilight light Grey



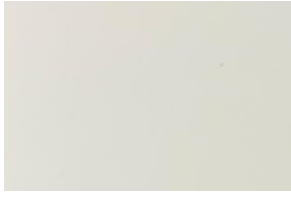
Y684 Red Copper Stripes



Y685 Midnight Ash



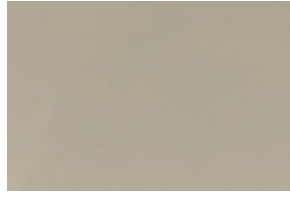
Y686 Premium Matte Grey



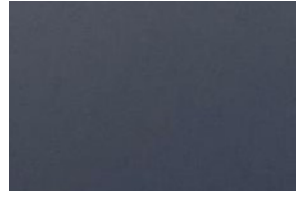
Y687 Milky White



Y691 Shining Silver White



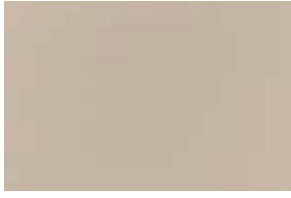
Y694 Pulan Glossy Ash



Y695 Moroccan Blue



Y696 Graphite Black



Y701 Earl Grey



Y704 Sliver Stripes



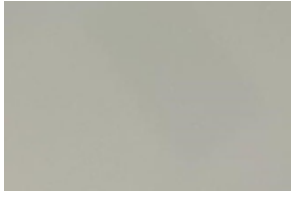
Y707 White Corrugated



Y713 Brushed Metal



Y715 Brushed Rose Gold



Y716 Advanced Glossy Grey



Y718 Streamer White



Y719 Luminous Grey



Y720 Light Grey Corrugated



Y721 Rock Dark Brown



Y722 Rock Soap Grey



Y723 Gold Stripes



Y724 Brushed Gold



ZH8003 Matte Oat Milk



## | LACQUER

Lacquer-finish cabinets bring a true sense of refined luxury to any space, including kitchens and vanities. With the option of a matte or glossy finish, lacquer provides a smooth, elegant texture, either soft without shine or richly reflective. It's an ideal choice for those seeking a combination of high-end aesthetics and long-lasting durability.





BLC-01 ESPRESSO



BLC-02 COFFEE



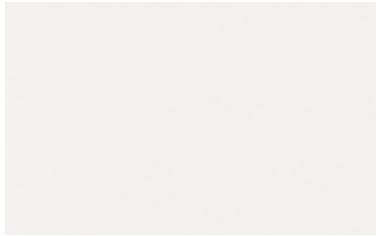
BLC-03 BURGANY



BLC-04 DARK GREY



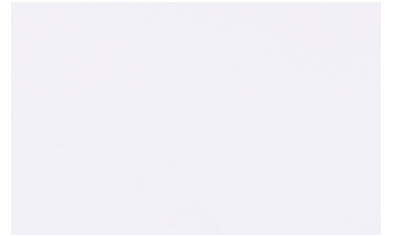
BLC-05 LIGHT GREY



BLC-07 MILKY WHITE



BLC-08A PURE WHITE



BLC-08B WARM WHITE



BLC-10 BLACK



BLC-11 LIGHT COFFEE



BLC-12 CRISSOO BLACK



BLC-13 SMOKED GREY

\*Additional Lacquer options available upon request





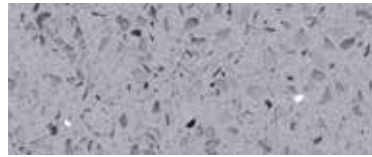
## STANDARD



BG5010 Ocean Foam



BS1005 Crystall Black



BS1008 Crystal Grey



BS1022 Ice Snow

## MID-GRADE



BS1003 Cement



BS2001 Pure White



BS2003 Dark Grey



BG5002 Intense White

## LUXURY



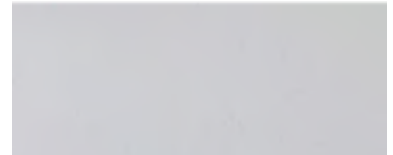
2038 Calacatta



2040 Daydream



2101 Calacatta Glacier



2102 Calacatta Moor



2103 Calacatta Thunder



2105 River Black Antique



2115 Calacatta Creek



3111 Calacatta Mist



3206 Calacatta Field



3208 Calatta Volcano



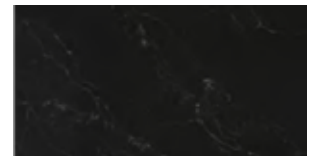
3209 Charlotte Web



BS2020/19201 Rugged Concrete



19203 Laterite



2113 Black Pearl



2041 Calacatta Infinity



19601 Maquina Black



2042 Calacatta Extra



2109 Desert Fantasy



2110 Breeze And Drizzle

# GRANITE

\*Additional Granite options available upon request



G350 Mount Rusty



G439 Flower White



G441 Wave White



G562A Maple Red Dark



G603 Bianco Sardo



G654 Padang Dark



G655N New Tomie White



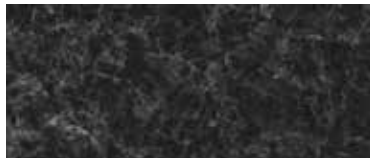
G801 Tan Brown



G819 Santa Cecilia



G821 Verde Ubatuba



G851 Nero Angola



G915 Butterfly Green



G921 Tiger Skin White



# CABINET HARDWARE



5605	Hole Spacing (mm)	Length (mm)	Width (mm)	Height (mm)
 Satin Aluminum  Volcanic Gray  Black	128	150	38	18
	192	250	38	18
	480	600	38	18

7701	Hole Spacing (mm)	Length (mm)	Width (mm)	Height (mm)
 Black	128	150	41	18
	192	250	41	18
	480	600	41	18

# CABINET HANDLES





3045	Hole Spacing (mm)	Length (mm)	Width (mm)	Height (mm)
 Matte Black    Silver	96	126	8.5	26
	128	158	8.5	26
	160	189	8.5	26
	192	220	8.5	26
	224	252	8.5	26
	256	284	8.5	26



5018	Hole Spacing (mm)	Length (mm)	Width (mm)	Height (mm)
 Polished Brass    New Brushed Nickel Matte Black    Aluminum	96	120	32	18
	128	150	32	18
	160	200	32	18
	192	250	32	18
	224	300	32	18
	256	400	32	18

# CABINET HANDLES





5026	Hole Spacing (mm)	Length (mm)	Width (mm)	Height (mm)
  Matte Black    Polished Brass	/	25	25	25



838	Hole Spacing (mm)	Length (mm)	Width (mm)	Height (mm)
 Brushed Satin Nickel	96	150	12	35
	128	200	12	35
	160	250	12	35
	192	300	12	35
	224	350	12	35



5032	Hole Spacing (mm)	Length (mm)	Width (mm)	Height (mm)
   Polished Brass    Chrome    Matte Black	/	60	12	31
	96	150	12	31
	128	200	12	31
	160	250	12	31
	192	300	12	31
	224	350	12	31
	416	500	12	31

# CABINET HANDLES



5515	Hole Spacing (mm)	Length (mm)	Width (mm)	Height (mm)
	96	106	10	27
	128	138	10	27
	160	170	10	27
	192	202	10	27



T415	Hole Spacing (mm)	Length (mm)	Width (mm)	Height (mm)
	96	117	8	27
	128	150	8	27
	160	184	8	27
	192	218	8	27

# | CABINET HINGES



# | DRAWERS AND SLIDES



# SPC LUXURY VINYL PLANK

## | STONE PLASTIC COMPOSITE (SPC)

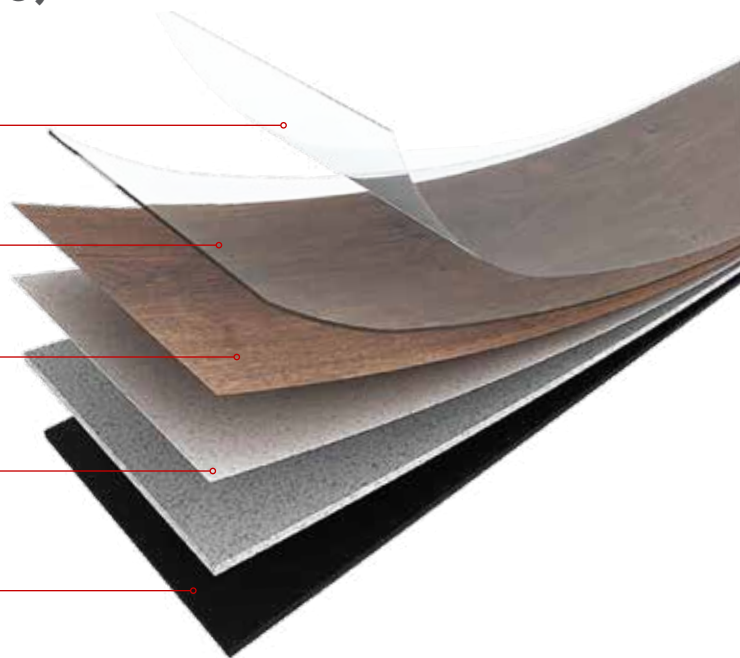
UV Layer

Water Layer

Colour Films

SPC Core

Foam (optional)



### SPC FLOORING ADVANTAGES

- Main component of the core is lime stone
- (Calcium carbonate) + PVC powder + Stabilizer
- Environment friendly
- Resilient core finished with strong UV coating, abrasion resistant finish
- 100% waterproof
- Excellent for areas with moisture problems

### SPECIFICATIONS & OPTIONS

**SIZE:** 48" x 5 7/8", 48" x 7 1/8", 48" x 8 5/8"  
60 1/4" x 7 1/8", 60 1/4" x 8 1/4"

**THICKNESS:** Between 2mm to 8mm

**WEARLAYER:** 0.15mm, 0.30mm, 0.50mm

**UNDERLAYMENT:** EVA, Cork, IXPE

**TEXTURE:** Crystal, Wood Texture, Random EIR, EIR

**OPTIONS:** 2G, 5G



# FLOORING SAMPLES

\*Additional options available upon request



# FLOORING COLOURS

\*Additional options available upon request



LN019



LN020



LN021



LN022



LN023



LN024



LN025



LN026



LN027



LN028 TILE



LN029 TILE



LN031 TILE



LN032 TILE



LN033 TILE



LV030 TILE



4016-8



6049



6087



6101



6108



6135



6179



6185



6186



6187



6194



6197



6199



6501



6502



6503



6506



6511



6524



6525



6526

# FLOORING COLOURS

\*Additional options available upon request



6527



6532



6540



6557



6558



6559



6560



6566



6567



6573



6574



6576



6579



6607



6609



6610



6611



6615



6619



6620



6622



6623



6625



6626



6627



6628



8271-2

# CARPET TILES

Featuring an attractive appearance, practical performance, and flexible installation options, Combina Global Carpet Tiles give customers plenty of room for creativity. They also offer key benefits such as fire retardance, durability, anti-static properties, and excellent size and dimensional stability. Combina Global Carpet Tiles are ideal for residential buildings, common areas, airports, offices, conference rooms, convention centres, and more.

Pile Material: Universal Nylon 6, 6

Structure: 1/10

Pile Height: 5.5-5-4-3 mm

Pile Weight: 18-24 oz

Primary Backing: Non-Woven

Secondary Backing: PVC+Glass Fibre+PVC

Dimension: 20" X 20"

(Other sizes available upon request including broadloom and carpet base boards)

## Certifications

- American CRI+PLUS Certificate
- CE Certifications, we have passed BS EN 13501-1:2002 Fire Test
- ISO9001:2000 Quality Certificate
- ISO14001:2004 Environmental Certificate
- BS4709 International Fireproof Inspection Report
- Membership of Wools of New Zealand Brand and Technology Program
- Advanced International Carpet Alliance for Environmental Stewardship
- Membership of CCIA & CFNA
- B1 National Fireproof Inspection Report
- GB/T 14768-1993 Fireproof Standard Report



# BEGINNING OF SUMMER SERIES

\*Additional options available upon request



LX-01



LX-02



LX-03



LX-04



LX-05



LX-06



LX-07



LX-08



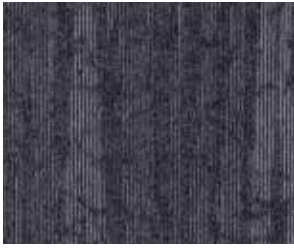
LX-09



LX-10

# GROWTH SERIES

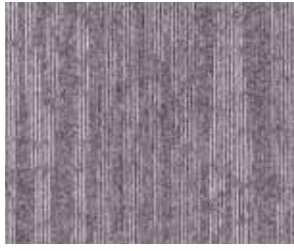
\*Additional options available upon request



Growth-001-01



Growth-001-02



Growth-001-03



Growth-001-07



Growth-001-08



Growth-001-10



Growth-002-01



Growth-002-06



Growth-002-07



Growth-002-08



Growth-003-01



Growth-003-02



Growth-003-06



Growth-003-07



Growth-003-08

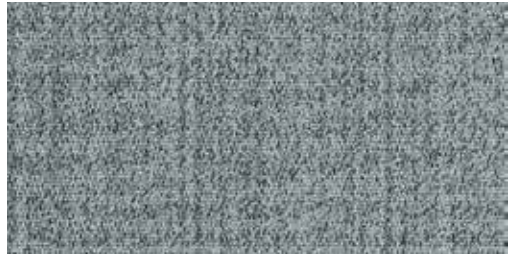
# AUTUMN EQUINOX SERIES



AUT-A-1



AUT-A-2



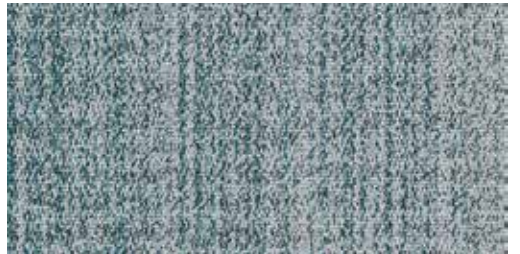
AUT-A-3



AUT-B-1



AUT-B-2



AUT-B-3



AUT-D-1



AUT-D-2



AUT-D-3

# SUN SERIES

\*Additional options available upon request



SUN001A



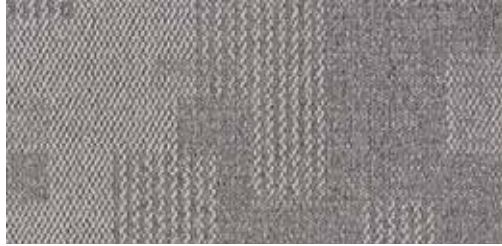
SUN001B



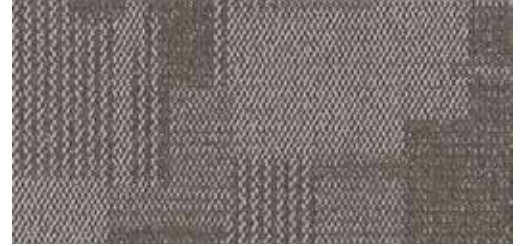
SUN001C



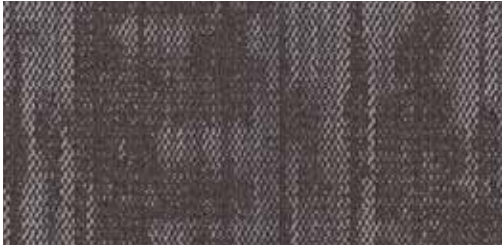
SUN001C



SUN001D



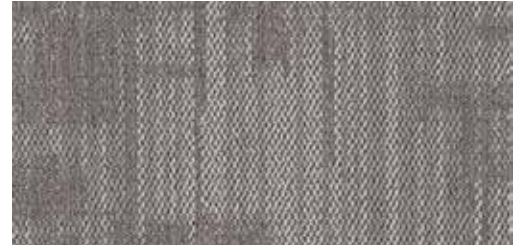
SUN001E



SUN001F



SUN001G



SUN001H

# LUMINOUS SERIES



Luminous I -001-01



Luminous I -001-02



Luminous I -001-03



Luminous I -001-06



Luminous I -001-07



Luminous I -001-08



Luminous I -002-01



Luminous I -002-02



Luminous I -002-03



Luminous I -002-04



Luminous I -002-05



Luminous I -002-06



Luminous I -002-07



Luminous I -002-08



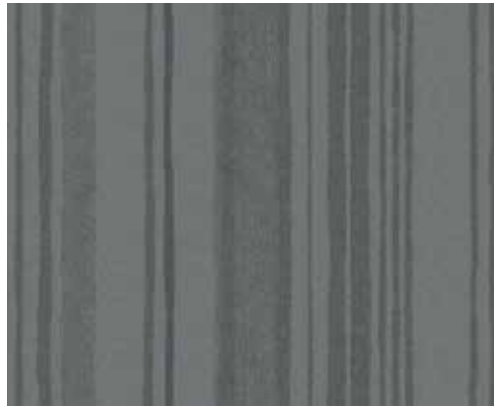
Luminous I -002-10

# ART OF GEOMETRY SERIES

\*Additional options available upon request



SH1480



SH1480-1



SH1480-2



SH1480A



SH1480A-1



SH1480B-1



SH1480B-2

# ART OF GEOMETRY SERIES

\*Additional options available upon request



SH1481



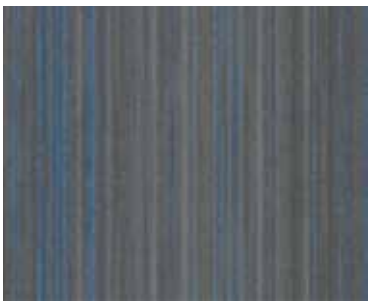
SH1481A



SH1481B



SH1481C



SH1482



SH1482A



SH1482A-1



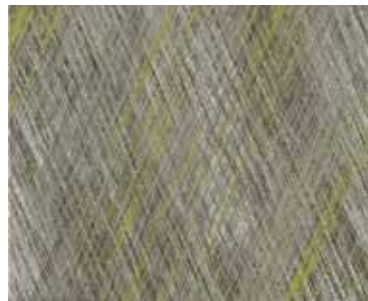
SH1482B



SH1504



SH1504A



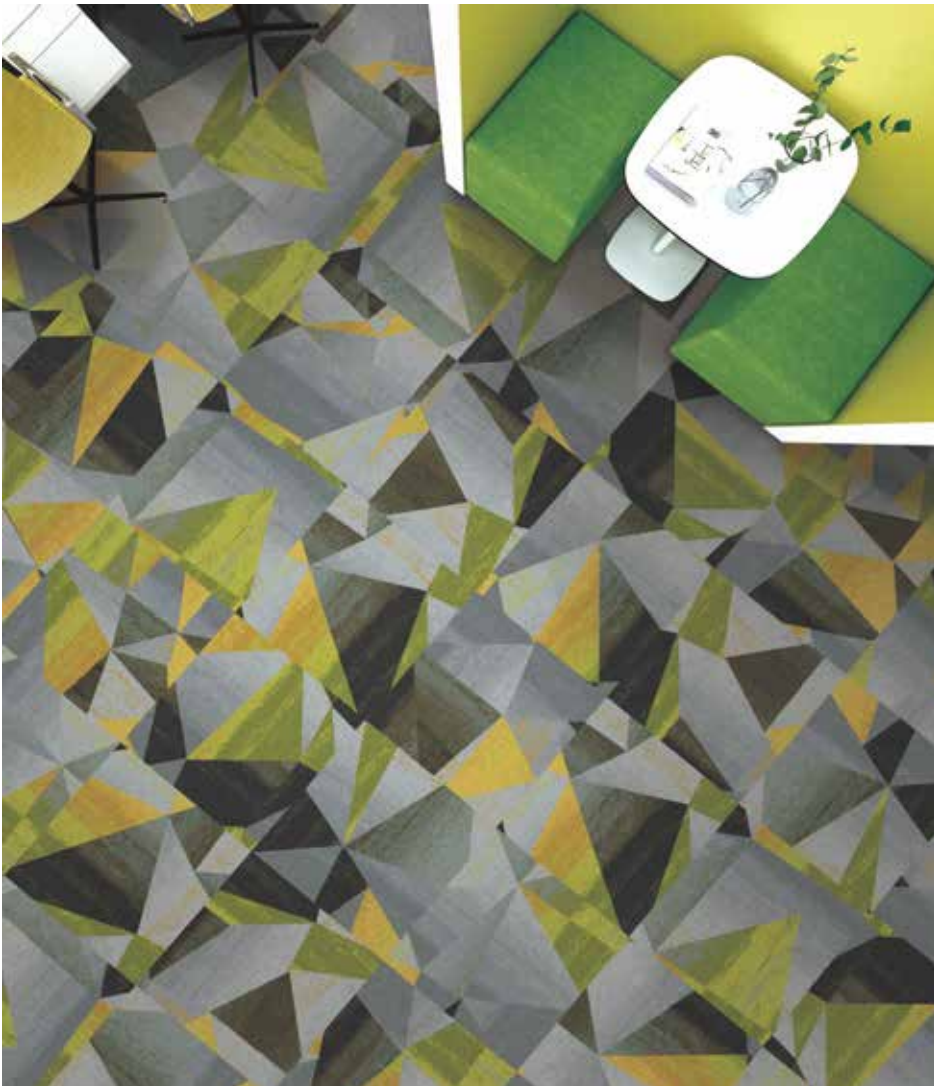
SH1504B



SH1504C

# ART OF GEOMETRY SERIES

\*Additional options available upon request



SH1488



SH1488A



SH1488B



SH1511



SH1511A



SH1511B



SH1511C



SH1511D

# CERAMIC WALL TILES



## | PRODUCT FEATURES

Our ceramic wall tiles feature 12 different gradients per color, making each installation unique. The varied patterns add depth, character, and style to any space. Whether you want a modern or classic look, these tiles will enhance your interiors and create standout walls.



B7530Y0

B7530Y1

B7530Y2

B7530Y3

B7530Y4



B7530Y5

B7530Y6

B7530Y7

B7530Y8

B7530Y9



B7530Y10

B7530Y11

B7530Y12

MB7530Y0

MB7530Y1



MB7530Y2

MB7530Y4

MB7530Y6

MB7530Y11

MB7530Y12



# HONEYCOMB BLINDS



## | PRODUCT FEATURES

Designed with a honeycomb structure, these blinds offer strong insulation, UV protection, and sound absorption, ideal for keeping living spaces comfortable and energy-efficient. They come in two options: a single-fabric style for consistent light control, and a Day & Night option that lets tenants switch between light-filtering and blackout. Both are durable, easy to use, and well-suited for long-term project installations.

## CONTROL SYSTEM



Cordless (day and night option)

## FABRIC SHADING EFFECT



26mm/45mm Sheer



26mm Light Filtering



26mm Black Out



38mm Dual Cell Light Filtering



38mm Dual Cell Black Out



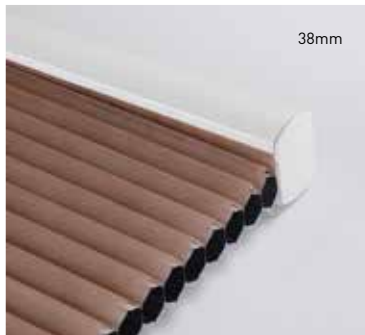
45mm Black Out

## AVAILABLE RAIL COLORS

\*Other control systems available upon request



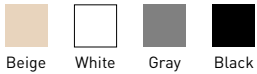
26mm



38mm



45mm



Beige White Gray Black



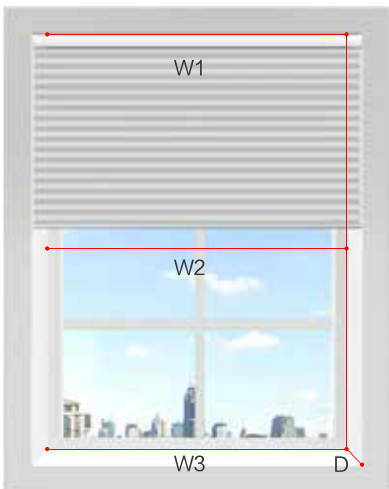
Beige White Gray Black



Beige White Gray Black

## MEASUREMENT AND INSTALLATION

### INSIDE MOUNT



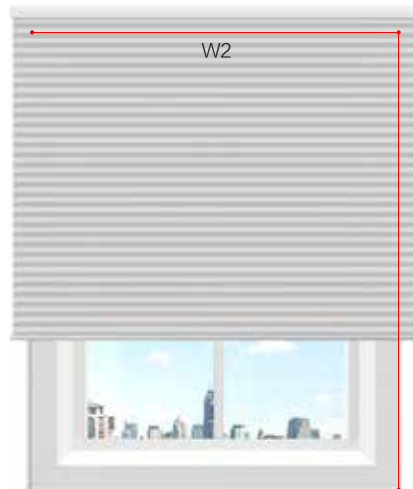
Measurement requirements:  
The depth (D) of the window hole should be more than 6cm.

Width: Measure W1, W2, W3, select the shortest one as the Width

Width of Blind = Width - 1cm

Height of Blind = Height

### OUTSIDE MOUNT



Window frames protruding the wall by more than 1 cm will not be suitable for the outside mounting.

Width of Blind = Width + 10cm

Height of Blind = Height + 15cm

## | 26MM LIGHT FILTERING



93020A



93020B



93020C



93020D



93020E



93020F



93020G



93020H



93020J



93020K

## | 26MM BLACKOUT



93021A



93021B



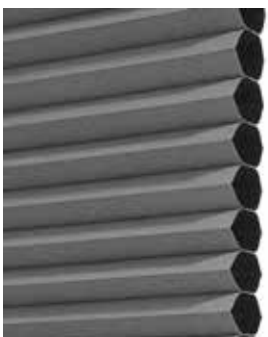
93021C



93021D



93021E



93021F



93021G



93021H

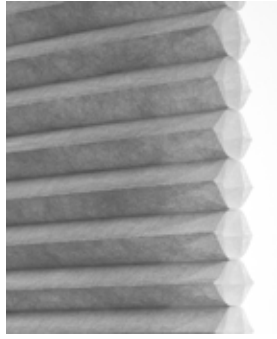
## | 38MM LIGHT FILTERING & BLACKOUT



93022A



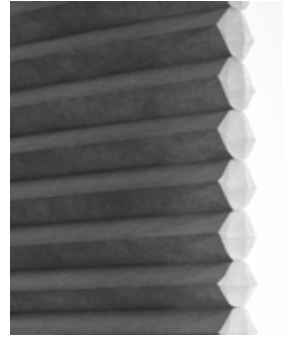
93022B



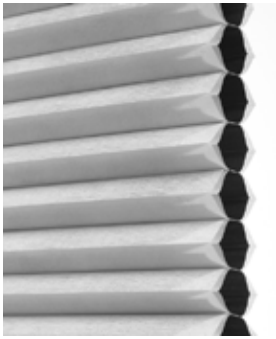
93022C



93022D



93022E



93023A



93023B



93023C



93023D



93023E

## | 45MM LIGHT FILTERING & BLACKOUT



93025A



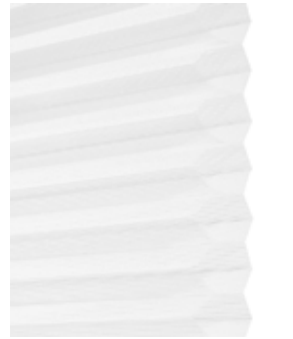
93025B



93025C



93025D



93025E



93024A



93024B



93024C



93024D



93024E

# ROLLER BLINDS



## | PRODUCT FEATURES

Our roller blind fabrics are durable and low-maintenance, making them a great fit for multifamily projects. They come in three shading levels, transparent, semi-blackout, and blackout, offering flexible light control for any room. With good insulation, dust resistance, and reliable performance, these fabrics work well for high-use spaces and provide a clean, modern look.

## | CONTROL SYSTEM



Cordless

## | FABRIC SHADING EFFECT



Transparent



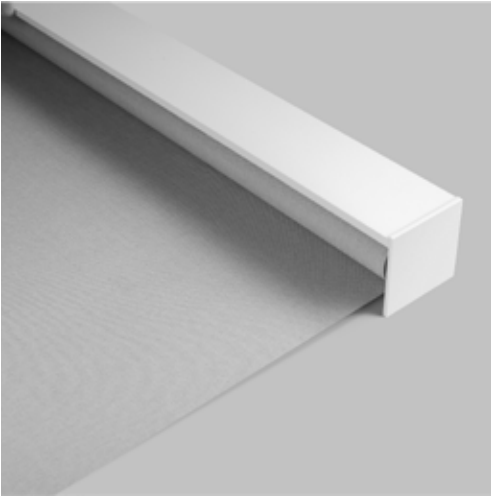
Semi-blackout



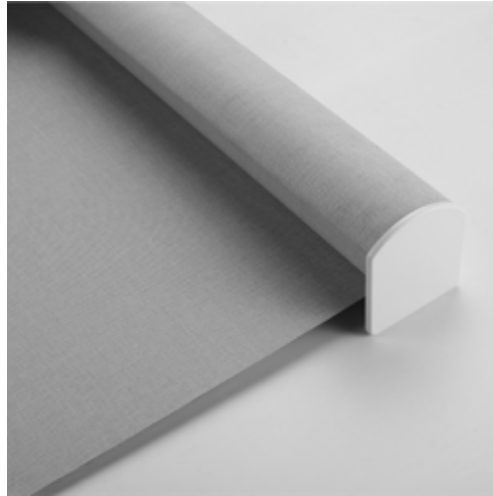
Blackout

## | AVAILABLE VALANCE

\*Other control systems available upon request



Minimalist

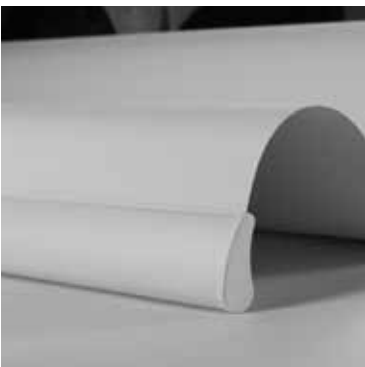


Burliness



Beam simple rolling

## | BOTTOM RAIL (STREAMLINED WATER-DROP)



Type A



Type B



Type C



Type D

# SEMI-BLACKOUT SERIES

\*Additional options available upon request



## SEMI-BLACKOUT

Number	Composition	Max Width	Weight	Color Fastness
82027	100% Polyester	300 cm	220g/m <sup>2</sup> ±5%	6-8 Grade



## SEMI-BLACKOUT

Number	Composition	Max Width	Weight	Thickness
82072C/D				120g/m <sup>2</sup> ±5%
82067E/F	100% Polyester	300 cm	0.5mm±5%	300g/m <sup>2</sup> ±5%
82072E	T/L70/30	230 cm		230g/m <sup>2</sup> ±5%



82027F



82027G



82027A



82027B



82027C



82027E



82027H



82072C



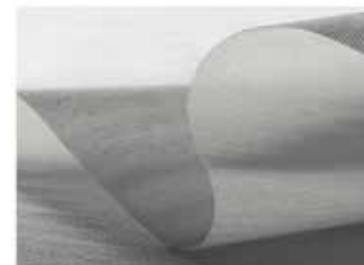
82072D



82072E



82067E



82067F

# SEMI-BLACKOUT SERIES

\*Additional options available upon request



## SEMI-BLACKOUT

Number	Composition	Max Width	Weight
82067M			195g/m <sup>2</sup> ±5%
82067N	T/L80/20	230 cm	175g/m <sup>2</sup> ±5%
82067G/H	100% Polyester		160g/m <sup>2</sup> ±5%
82067I/J			205g/m <sup>2</sup> ±5%



82067M



82067N



82067G



82067H



82067I

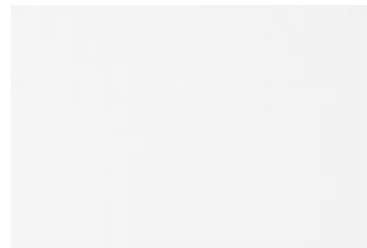


82067J

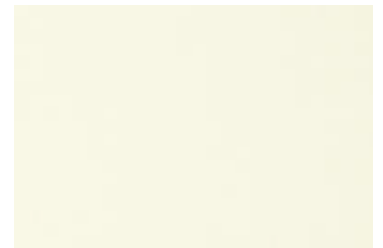


## SEMI-BLACKOUT

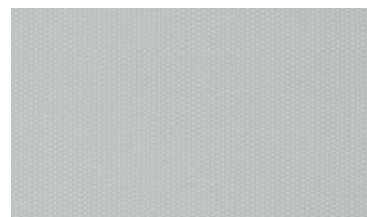
Number	Composition	Max Width	Weight
82086	100% Polyester	230 cm	190g/m <sup>2</sup> ±5%



82086W



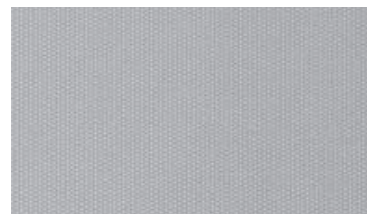
82086B



82086C



82086D



82086E

# SEMI-BLACKOUT SERIES



## SEMI-BLACKOUT

Number	Composition	Max Width	Weight	Thickness
82082	100% Polyester	300 cm	240g/m <sup>2</sup> ±5%	0.45mm±0.05%

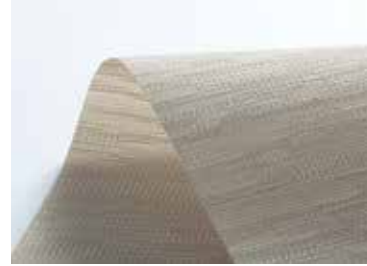
\*Additional options available upon request



82082A



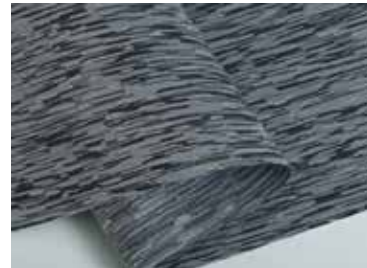
82082B



82082C



82082D



82082E

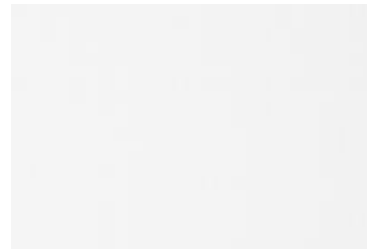
# BLACKOUT SERIES



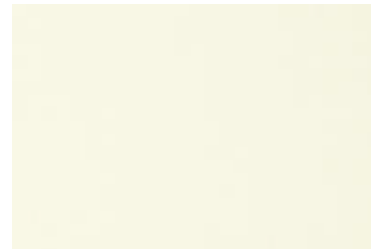
## BLACKOUT

Number	Composition	Max Width	Weight
82086	100% Polyester	230 cm	330g/m <sup>2</sup> ±15%

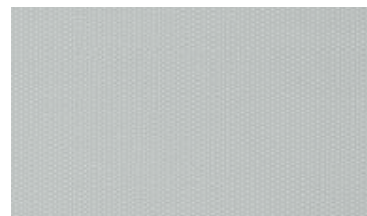
\*Additional options available upon request



82086F



82086G



82086H



82086I



82086J

# BLACKOUT SERIES

\*Additional options available upon request

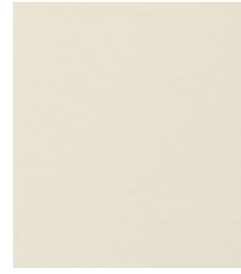


## BLACKOUT

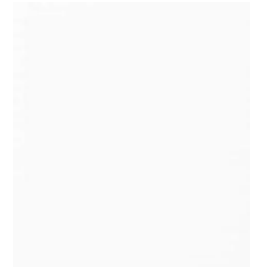
Number	Composition	Max Width	Weight	Thickness
82010	100% Polyester	300 cm	310g/m <sup>2</sup> ±10%	0.03mm±0.05%



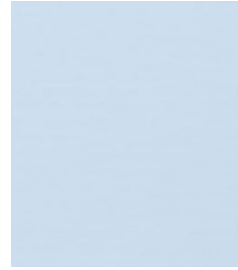
82010J



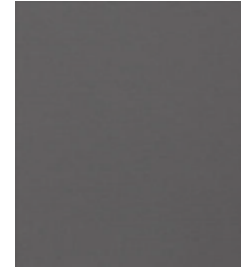
82010T



82010G



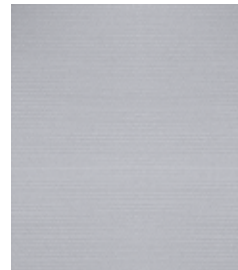
82010L



82010I



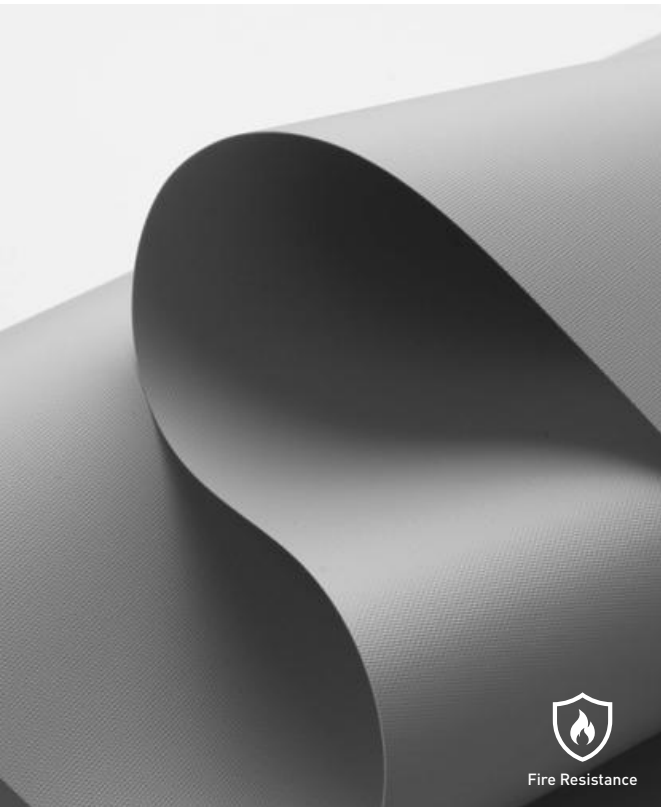
82010M



82010S



82010W

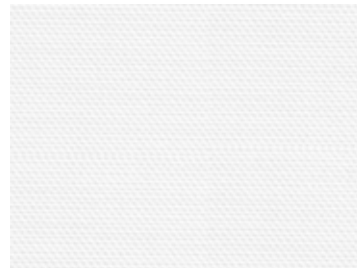


## BLACKOUT

Number	Composition	Max Width	Weight	Thickness	Color Fastness
82026	40% Fiberglass + 60% PVC	200 cm 250 cm 300 cm	480g/m <sup>2</sup> ±5%	0.38mm±5%	6-8 Grade



Fire Resistance



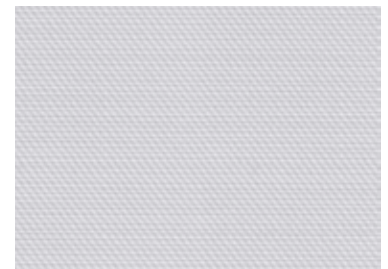
82026A



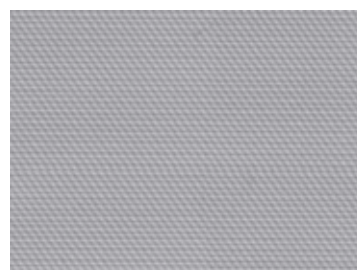
82026B



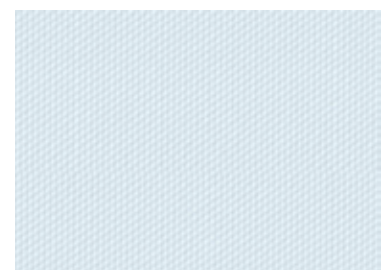
82026C



82026E



82026F



82026G

# BLACKOUT SERIES

\*Additional options available upon request



## BLACKOUT

Number	Composition	Max Width	Weight	Thickness	Color Fastness
82028	100% Polyester	300 cm	330g/m <sup>2</sup> ±10%	0.05mm±5%	6-8 Grade



82028F



82028G



82028H



82028A



82028B



82028C



82028E



## BLACKOUT

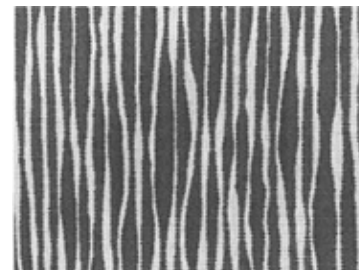
Number	Composition	Max Width	Weight	Thickness	Color Fastness
82029	100% Polyester	300 cm	320g/m <sup>2</sup> ±10%	0.5mm±5%	6-8 Grade



82029F



82029G



82029H

# BLACKOUT SERIES

\*Additional options available upon request



82067K



82067L



82067A



82067B



82067C



82067D



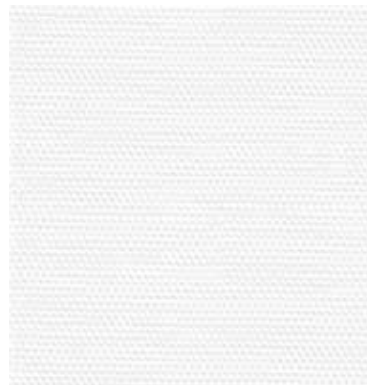
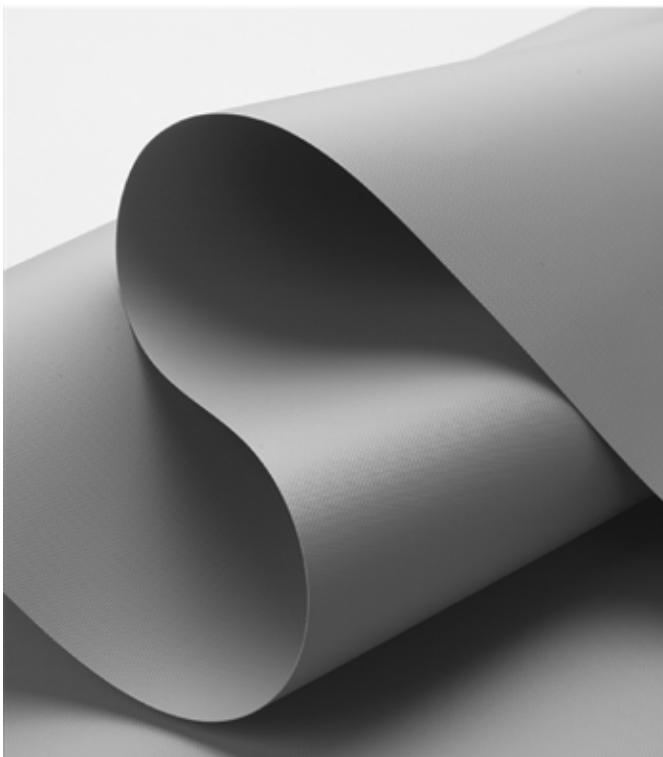
82067O



82067P

## BLACKOUT

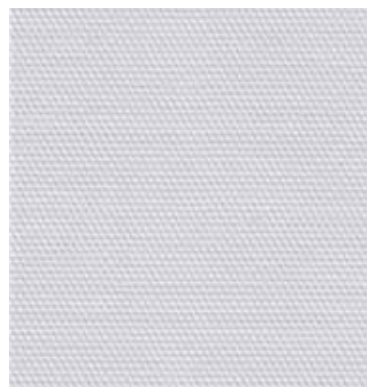
Number	Composition	Max Width	Weight
82067K	T/L80/20	230 cm	330g/m <sup>2</sup> ±5%
82067L			360g/m <sup>2</sup> ±5%
82067A/B	100% Polyester		320g/m <sup>2</sup> ±5%
82067O/P			280g/m <sup>2</sup> ±5%
82067C/D			350g/m <sup>2</sup> ±5%



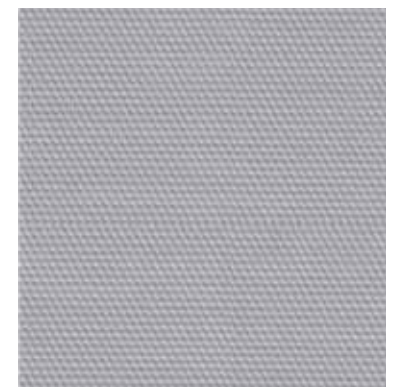
YM-4201



YM-4203



YM-4205



YM-4206

## BLACKOUT

Number	Composition	Max Width	Weight	Thickness
YM-42	40% Fiberglass + 60% PVC	200/250/300cm	480g/m <sup>2</sup> ±5%	0.38mm±5%

# BLACKOUT SERIES



## BLACKOUT

Number	Composition	Max Width	Weight	Thickness
82083	100% Polyester	300 cm	425g/m <sup>2</sup> ±15%	0.45mm±0.05%

\*Additional options available upon request



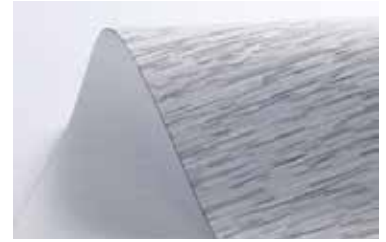
82083A



82083B



82083C 366g/m<sup>2</sup>±15%



82083D



82083E

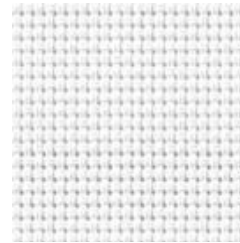
# 5% OPENESS SERIES



## 5% OPENESS FACTOR

Number	Composition	Max Width	Weight	Thickness
82006	30% Polyester + 70% PVC	300 cm	520g/m <sup>2</sup> ±5%	0.75mm±5%

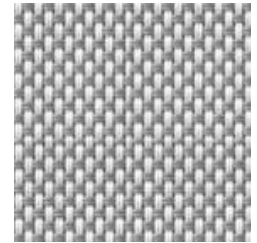
\*Additional options available upon request



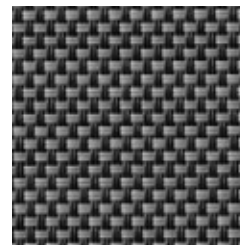
82006A



82006B



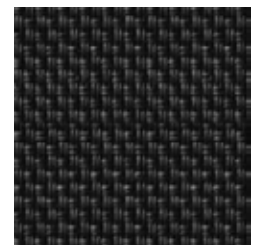
82006C



82006L



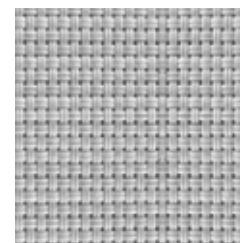
82006M



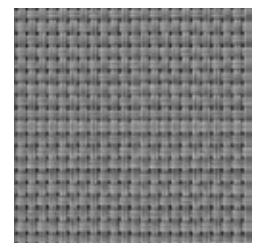
82006N



82006O



82006Q



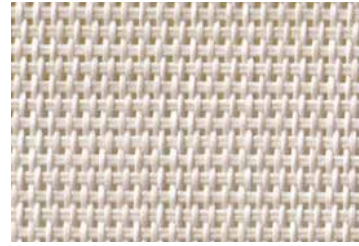
82006R

## 5% OPENESS SERIES

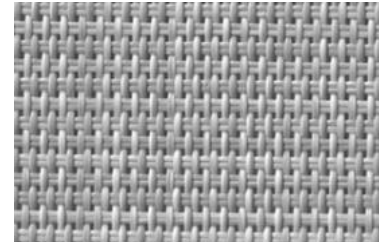


### 5% OPENESS FACTOR

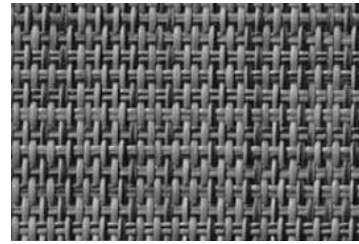
Number	Composition	Max Width	Weight	Thickness
82088	30% Polyester + 70% PVC	300 cm	428g/m <sup>2</sup> ±5%	0.73mm±5%



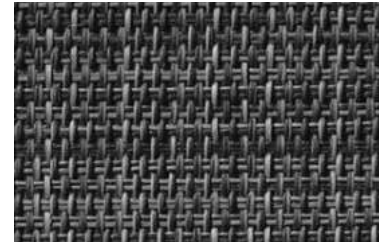
82088F



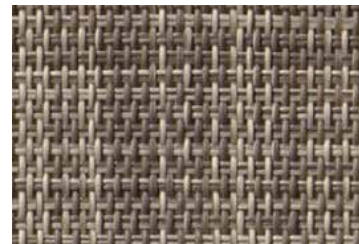
82088G



82088H



82088I



82088J

\*Additional options available upon request

## 3% OPENESS SERIES



### 3% OPENESS FACTOR

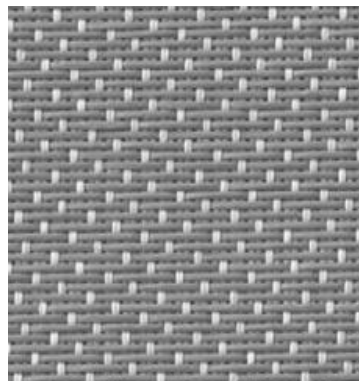
Number	Composition	Max Width	Weight	Thickness
82025	30% Polyester + 70% PVC	300 cm	437g/m <sup>2</sup> ±5%	0.66mm±5%



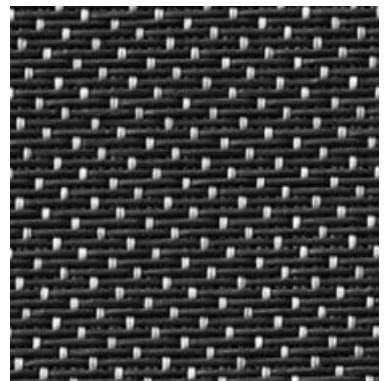
82025A



82025B



82025C



82025E

\*Additional options available upon request

# 3% OPENESS SERIES

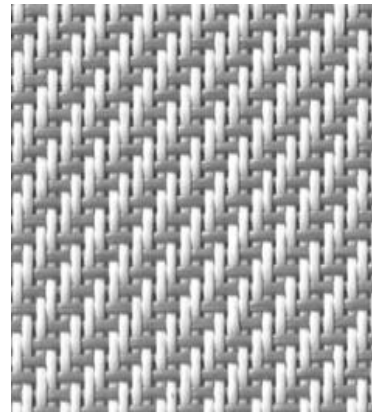
\*Additional options available upon request



82025F



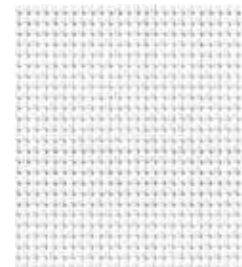
82025G



82025H

## 3% OPENESS FACTOR

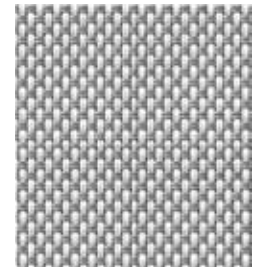
Number	Composition	Max Width	Weight	Thickness
82025	30% Polyester + 70% PVC	300 cm	476g/m <sup>2</sup> ±5%	0.69mm±5%



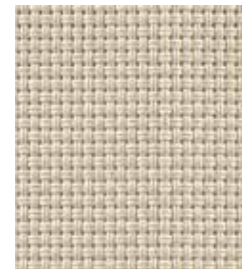
SC-A2-301



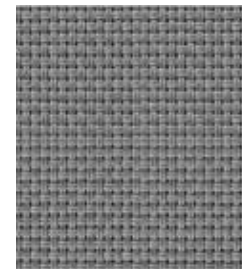
SC-A2-302



SC-A2-303



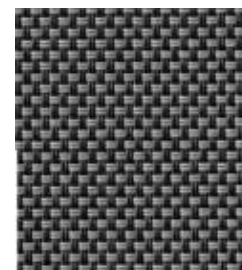
SC-A2-304



SC-A2-306



SC-A2-308



SC-A2-310



SC-A2-311

## 3% OPENESS FACTOR

Number	Composition	Max Width	Weight	Thickness
SC-A2	30% Polyester + 70% PVC	200/250/300cm	440g/m <sup>2</sup> ±5%	0.65mm±5%

## 3% OPENESS SERIES



### 1% OPENESS FACTOR

Number	Composition	Max Width	Weight	Thickness
82024	30% Polyester + 70% PVC	300 cm	525g/m <sup>2</sup> ±5%	0.73mm±5%

\*Additional options available upon request



82024A



82024B



82024C



82024E

## 0% OPENESS SERIES



### 0% OPENESS FACTOR

Number	Composition	Max Width	Weight	Thickness
82006	30% Polyester + 70% PVC	300 cm	663g/m <sup>2</sup> ±5%	0.84mm±5%

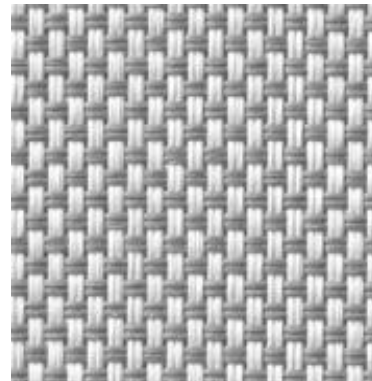
\*Additional options available upon request



82006G



82006D



82006E

# ZEBRA BLINDS



## | PRODUCT FEATURES

Our zebra shades offer a versatile range of colors, textures and prints with simple yet elegant light control options.

## | CONTROL SYSTEM



Cordless

## | FABRIC SHADING EFFECT



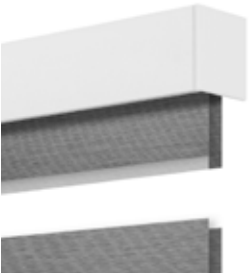
Open



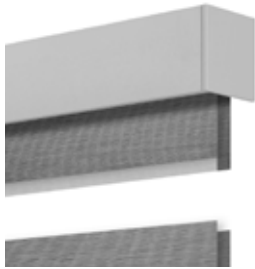
Close

## | AVAILABLE VALANCE

\*Other control systems available upon request



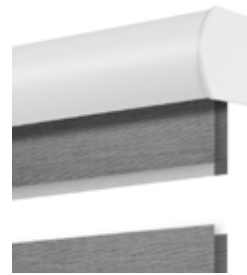
Square V2 White



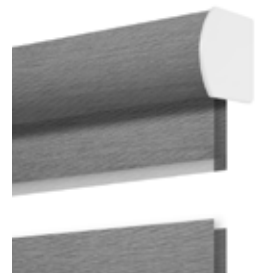
Square V2 Gray



Square V2 Black

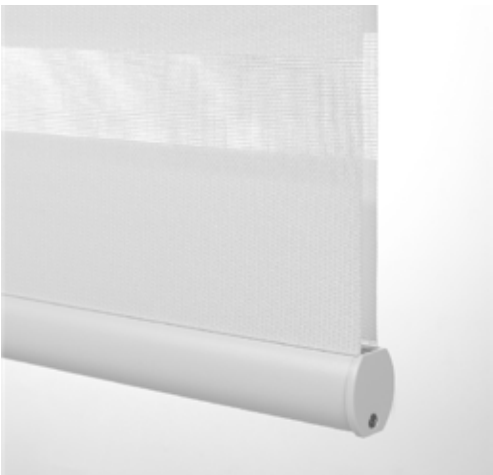


Curve White S2

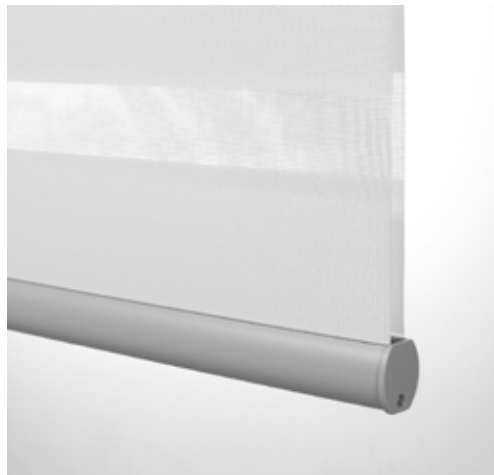


Fabric Wrapped S3

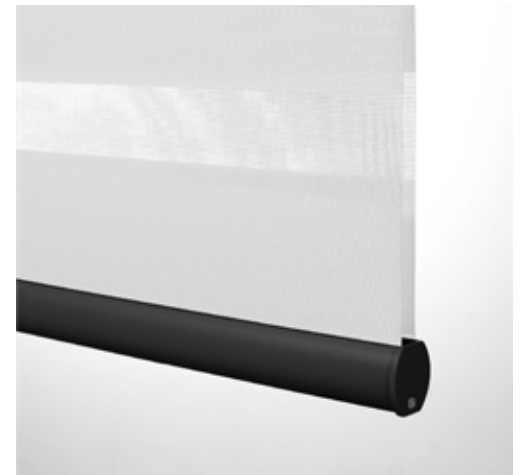
## | BOTTOM RAIL (TYPE A)



White



Gray



Black

# ZEBRA SEMI-BLACKOUT SERIES

\*Additional options available upon request



## SEMI-BLACKOUT

Number  
83011

Composition  
100% Polyester

Max Width  
300 cm

Weight  
140g/m<sup>2</sup>±5%

Color Fastness  
6-7 Grade

Solid & Sheer Repeat  
7.5\*5 cm



83011A



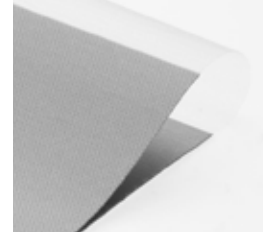
83011B



83011C



83011E



83011F



## SEMI-BLACKOUT

Number  
83013

Composition  
100% Polyester

Max Width  
300 cm

Weight  
137g/m<sup>2</sup>±5%

Color Fastness  
6-7 Grade

Solid & Sheer Repeat  
7.5\*5 cm



83013A



83013B



83013C



83013G



83013F



83013H



83013I



## BLACKOUT

Number  
83015

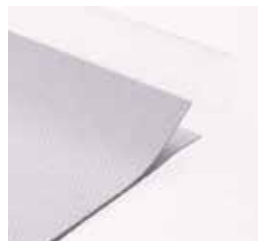
Composition  
100% Polyester

Max Width  
300 cm

Weight  
206g/m<sup>2</sup>±5%

Color Fastness  
6-7 Grade

Solid & Sheer Repeat  
9\*6 cm



83015F



83015G



83015H



83015I

# ZEBRA SEMI-BLACKOUT SERIES

\*Additional options available upon request



## SEMI-BLACKOUT

**Number**  
83039

**Composition**  
100% Polyester

**Max Width**  
300 cm

**Weight**  
157.5g/m<sup>2</sup>±5%

**Color Fastness**  
6-7 Grade

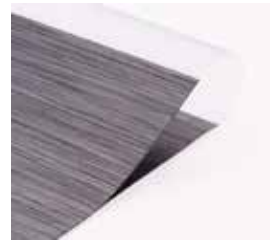
**Solid & Sheer Repeat**  
10\*6 cm



83039A



83039B



83039E



83039F



83039G



## SEMI-BLACKOUT

**Number**  
83020

**Composition**  
35% Polyester + 65% PVC

**Max Width**  
300 cm

**Weight**  
267g/m<sup>2</sup>±5%

**Color Fastness**  
8 Grade

**Solid & Sheer Repeat**  
7.5\*5 cm



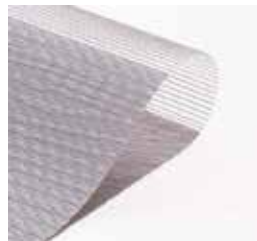
83020E



83020F



83020G



83020H



## SEMI-BLACKOUT

**Number**  
83019

**Composition**  
35% Polyester + 65% PVC

**Max Width**  
300 cm

**Weight**  
265g/m<sup>2</sup>±5%

**Color Fastness**  
8 Grade

**Solid & Sheer Repeat**  
7.5\*5 cm



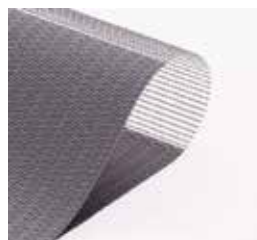
83019F



83019H



83019G



83019I

# ZEBRA SEMI-BLACKOUT SERIES

\*Additional options available upon request



## SEMI-BLACKOUT

Number  
83035

Composition  
70% Polyester + 30% RM

Max Width  
300 cm

Weight  
270g/m<sup>2</sup>±5%

Color Fastness  
7-8 Grade

Solid & Sheer Repeat  
5.5 cm



83035A



83035B



83035D



83035E



83035F



83035K



83035M



## SEMI-BLACKOUT

Number  
83021

Composition  
100% Polyester

Max Width  
300 cm

Weight  
470g/m<sup>2</sup>±5%

Color Fastness  
7-8 Grade

Solid & Sheer Repeat  
6.5 cm



83021E



83021F



83021G



83021H

# ZEBRA BLACKOUT SERIES

\*Additional options available upon request



## BLACKOUT

Number  
83012

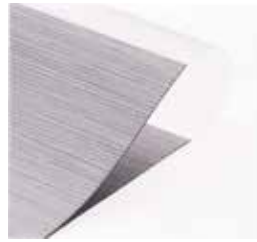
Composition  
100% Polyester

Max Width  
300 cm

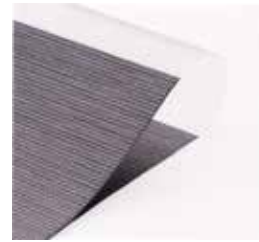
Weight  
172g/m<sup>2</sup> ± 5%

Color Fastness  
6-7 Grade

Solid & Sheer Repeat  
7.5\*5 cm



83012A



83012B



83012C



83012F



83012G



## BLACKOUT

Number  
83014

Composition  
100% Polyester

Max Width  
300 cm

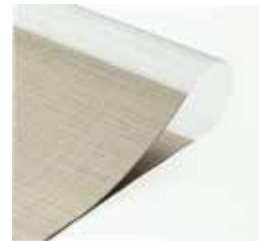
Weight  
224g/m<sup>2</sup> ± 5%

Color Fastness  
6-7 Grade

Solid & Sheer Repeat  
9\*6 cm



83014F



83014G



83014H



83014I



## BLACKOUT

Number  
83017

Composition  
100% Polyester

Max Width  
300 cm

Weight  
201g/m<sup>2</sup> ± 5%

Color Fastness  
6-7 Grade

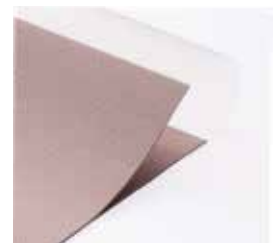
Solid & Sheer Repeat  
7.5\*5 cm



83017F



83017G



83017H



83017I

# PLUMBING FIXTURES & BATHING SYSTEMS



## | PRODUCT FEATURES

Design and customize your shower and bathtub with ease. Create a space that reflects your personal style and fits your needs perfectly. Choose from our wide selection of styles, materials, and finishes to bring your dream bathroom to life.

# BATHROOM FAUCETS



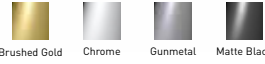
0066



Brushed Gold Chrome Gunmetal Matte Black



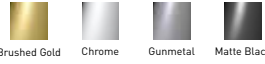
0067



Brushed Gold Chrome Gunmetal Matte Black



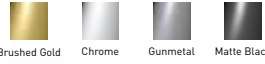
0068



Brushed Gold Chrome Gunmetal Matte Black



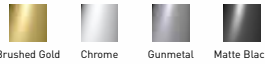
0069



Brushed Gold Chrome Gunmetal Matte Black



0070



Brushed Gold Chrome Gunmetal Matte Black



0115



Brushed Gold Chrome Gunmetal Matte Black



0771



Brushed Gold Chrome Gunmetal Matte Black



2226



Chrome Brushed Nickel Matte Black



2233



Brushed Gold Chrome Gunmetal Matte Black



6001



Brushed Gold Chrome Gunmetal Matte Black



B016 (CY)



Chrome Matte Black



B067 (CY)



Chrome Matte Black



B091 (CY)



Chrome Matte Black



B526



Chrome



B625 (CY)



Chrome Matte Black



TWP020011



Chrome Matte Black



TWP020115



Chrome



TWP050011



Chrome White Matte Black



TWP090011



Chrome Matte Black



TWP090511



Chrome



TWP100015



Chrome



TWP100311



Brushed Gold Chrome Matte Black



TWP271011



Brushed Gold Chrome Brushed Nickel Matte Black

# BATHTUB FAUCETS

TWG0805021



Chrome



TWG0905011



Chrome



# KITCHEN FAUCETS

3026



Brushed Gold Chrome Gunmetal Matte Black



3027



Brushed Gold Chrome Gunmetal Matte Black



3028



Brushed Gold Chrome Gunmetal Matte Black



K134 (CY)



Matte Black



K149 (CY)



Matte Black



K163A (CY)



Matte Black



K534 (CY)



Chrome



K543 (CY)



Chrome



K546 (CY)



Matte Black



K670 (CY)



Matte Black



K672 (CY)



Matte Black



TWP10002



Chrome



TWP10105



Chrome



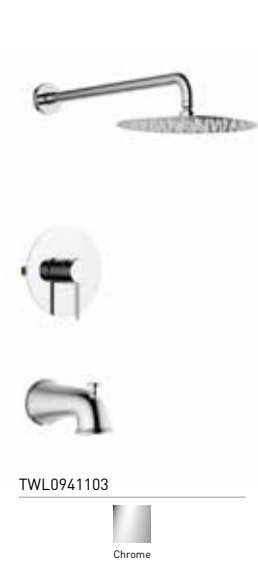
TWP10107



Chrome



# SHOWER FAUCET SETS



# SHOWER SETS

\*Additional options available upon request

## ACRYLIC SHOWER BASES



ABC6032  
60"x32"  
*(drain location: left, right, or centered)*



SS4832  
48"x32"  
*(drain location: left or right)*



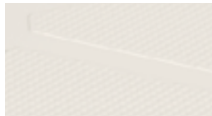
SS6032  
60"x32"  
*(drain location: left or right)*



ABD6036  
60"x36"



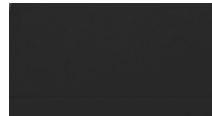
White



Beige



White Marble



Black



Marble Grey



Stone Grey

## ACRYLIC SHOWER WALL PANEL



AWF32  
32"x32"x74" | 32"x32"x77" | 32"x32"x72"



ABW60  
60"x77"



AWF3260  
32"x60"x32"x72 1/16"

# SHOWER SETS

\*Additional options available upon request

## ACRYLIC SHOWER WALL PANEL KITS



PBA32103-R2MW (2 sides)  
Max: 63"x103"



PBA3263103-1MW (3 sides)  
Max: 63"x103"



PBC323279-R2W01 (2 sides)  
Max: 77"x103"



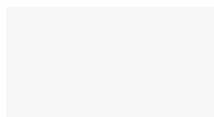
PBC326032-1W01 (3 sides)  
Max: 77"x103"



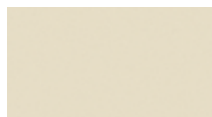
PBB323279-R2W02 (2 sides)  
Max: 77"x103"



PBC326032-1W02 (3 sides)  
Max: 77"x103"



White



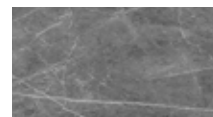
Beige



Black



Marble White

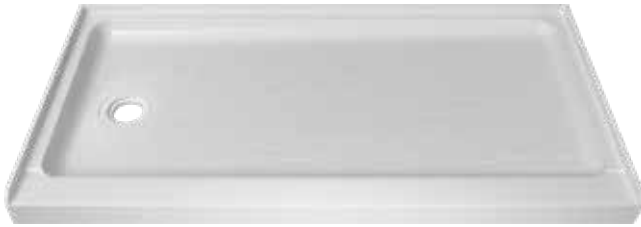


Marble Grey



Marble Black

## SHEET MOLDING COMPOUND (SMC) SHOWER BASES



ACC6030  
60"x30"  
*(drain location: left or right)*



ACC6032  
60"x32"  
*(drain location: left or right)*

## SMC SHOWER WALL PANEL KITS



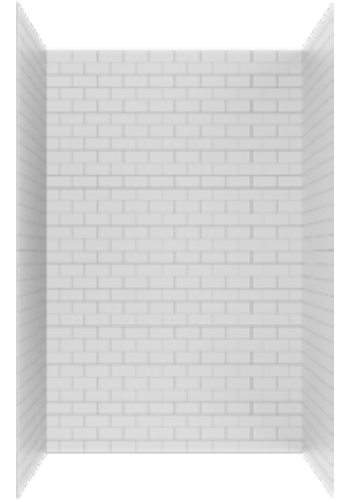
PCA3696-R2W  
Max: 60"x96"



PCA366096-1W  
Max: 60"x96"



Brick (2 sides)  
Max: 60"x96"



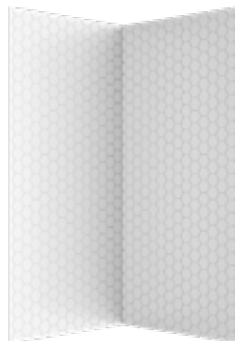
Brick (3 sides)  
Max: 60"x96"



Wood Grain (2 sides)  
Max: 60"x96"



Wood Grain (3 sides)  
Max: 60"x96"



Hexagon (2 sides)  
Max: 60"x96"



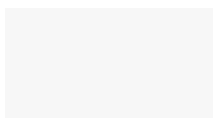
Hexagon (3 sides)  
Max: 60"x96"



Herring Bone (2 sides)  
Max: 60"x96"



Herring Bone (3 sides)  
Max: 60"x96"



White



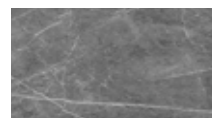
Wood Grain



Marble 1



Marble 2



Marble 3



Marble 4

# SHOWER DOORS

\*Additional options available upon request



**ROME-MB CR6122B**  
Glass thickness: 5/16", 3/8"  
Size: 60"x75"



**ROME-CH**  
Glass thickness: 5/16", 3/8"  
Size: 60"x75"



**ROME CR6122C**  
Glass thickness: 5/16", 3/8"  
Size: 60"x75"



**MIAMI MI5975 BN**  
Glass thickness: 5/16", 3/8"  
Size: 60"x75"



**CLA1231**  
Glass thickness: 5/16", 3/8"  
Size: 60"x75"



**TAMPA-MB**  
Glass thickness: 3/8"  
Size: 60"x75"



**TAMPA-CH**  
Glass thickness: 5/16", 3/8"  
Size: 60"x75"



**BERLIN BE-5972-BN-40**  
Glass thickness: 5/16"  
Size: 60"x75"



**SURREY SU-2062-6070-BN-40**  
Glass thickness: 5/16"  
Size: 60"x75"



Chrome



Brushed Nickel



Matte Black

# BATHTUBS

\*Additional options available upon request



**BWA6030**  
60"x30"x21" | 60"x32"x21"  
(drain location: left or right)



**BWS6032**  
60"x32"x21"  
(drain location: left or right)



**PBH306060-1W**  
30"x60"x60" | 32"x60"x60"



**PBI326058-1W**  
32"x60"x58"



**PBJ306060L/R-1W**  
30"x60"x60" | 32"x60"x60"

\*Tub base and wall panels sold separately



**BERLIN-BU-MB**  
Glass thickness: 5/16", 1/4"  
Size: 60"x75"



**MIAMI MI5960 CH**  
Glass thickness: 5/16", 3/8"  
Size: 60"x75"



**ROME RM-6066-40**  
Glass thickness: 3/8"  
Size: 60"x75"



**TAMPA-BU-GP**  
Glass thickness: 5/16", 3/8"  
Size: 60"x75"

## FREE-STANDING BATHTUBS

\*Additional options available upon request



BAA-210  
66 8/9" x 30 1/3" x 29 1/2"



HXQ183  
67" x 31" x 24"



Q360S-A  
59" x 30" x 24" | 63" x 30" x 24" | 67" x 31" x 24"

## ACCESSIBILITY BATHTUBS



BG-304  
53" x 30" x 41"  
(drain location: left or right)



BG-305  
32" x 60" x 22"  
(drain location: left or right)



BG327  
52" x 30" x 47"  
(drain location: left or right)



**COMBINA**  
**GLOBAL**

[combinaglobal.com](http://combinaglobal.com) | [info@combinaglobal.com](mailto:info@combinaglobal.com)

\*The sample images shown in this catalogue may not accurately represent the final product. Please contact us for more details or visit our showroom floor.